

## Ride Designs® JAVA® Cushion

Feel the difference.



**Better by every measure:**

- Cooler and dryer
- Lower pressures
- More stable
- Increased comfort
- Lighter weight
- True adjustability



# JAVA<sup>®</sup>

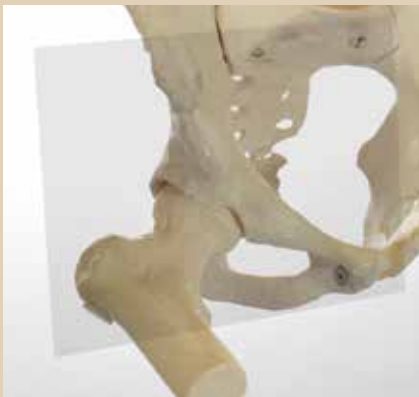
## Better by every measure.

Ride Designs' patented Java<sup>®</sup> Cushion contour works by redistributing the forces of pressure and shear from high risk areas while selectively applying the forces to areas more tolerant. The result is the potential for:

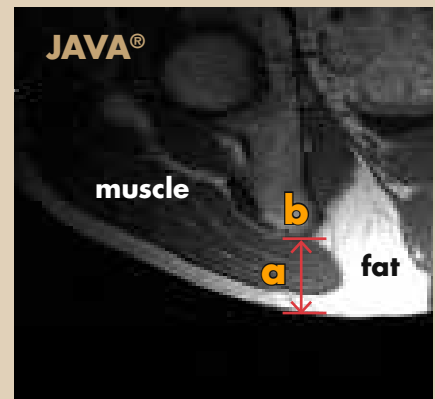
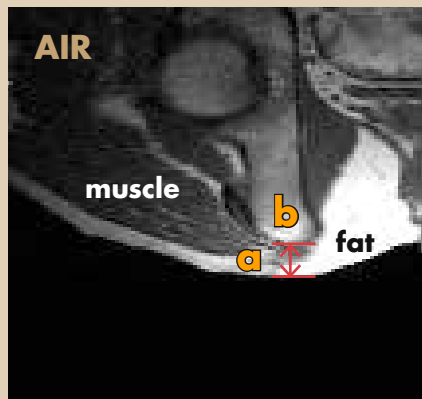
- Greater sitting stability for improved functional performance
- Improved skin outcomes
- Lower tissue distortion
- Lower long-term skin risk

### Minimal deep tissue deformation to reduce risk for skin breakdown

Area of scan is shaded for orientation.

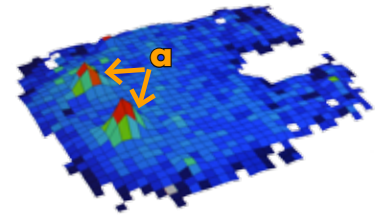


Sitting in an open MRI, we can see and measure deep tissue deformation, a leading cause of severe pressure sores. Simply put, the less deep tissue deformation when seated on a cushion, the lower the risk for deep tissue injury. Notice how little tissue deformation occurs on the Java Cushion as compared to sitting on a properly inflated air cushion as evidenced by measurement of muscle and fat thickness (a) below the ischial tuberosities (b).



### AIR ▼

Columns of air lack the stability needed for postural control, and peak pressures tend to be at the high risk bony prominences, especially the ischial tuberosities (a).



### ◀ JAVA

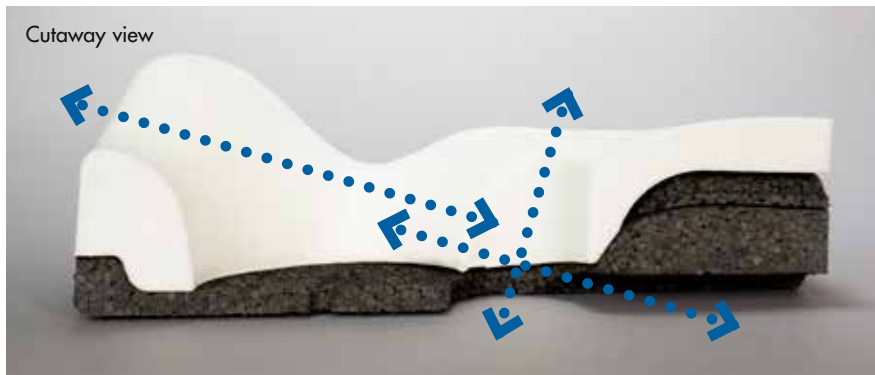
Safe and stable support of low risk areas and off-loading of high risk areas:

- a. Ischial Tuberosities
- b. Greater Trochanters
- c. Coccyx/Sacrum
- d. Perineum(Groin)

Aids in greater sitting stability and skin outcomes.

## Heat and moisture management

Vented base, contoured top foam, and breathable spacer fabric cover (not shown) all work together to help keep skin cool and dry.



## Really lightweight

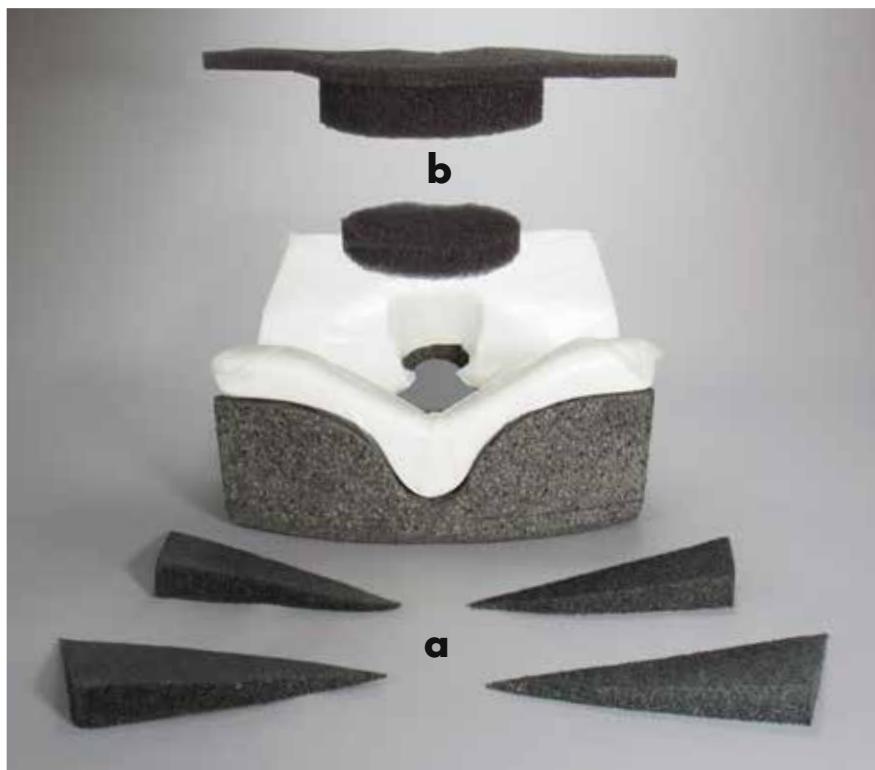
43% lighter\*

No longer do you have to compromise performance for light weight!

\*16 x 16" Java Cushion weighs 2.2 lbs, as compared to a 16 x 16" air cushion, weighing in at 3.9 lbs.

## Adjustable

The skin protection qualities of the Java Cushion can be adjusted through the use of Ride CAM® wedges (a) and well inserts (b).



Ride CAM wedges adjust the cushion for ischial clearance, and can also be used to help correct pelvic obliquity.



No wedges.



One wedge.



Two wedges.



Cross section of Java Cushion with top well insert.



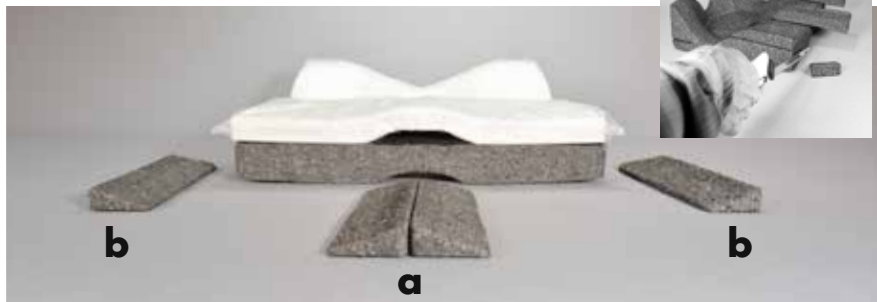
Cross section of Java Cushion with top well insert and spacer.

Soft, breathable well inserts are optional and can be used to adjust the Java Cushion for ischial loading, improved comfort, and hemorrhoid tissue support.

For the best possible pressure, heat, and moisture management, Ride designs recommends use of the Java Cushion without well inserts.



## Lower Extremity Support



Medial (a) and lateral (b) thigh support accessories are interchangeable. Use them between the legs to reinforce the medial thigh contour in the top foam, or on the side of the legs to create a lateral thigh support contour.

One size fits all. Simply configure the accessories to achieve the desired lower extremity alignment, then trim to fit.



## Java Cushion Specifications

Cushion Sizes (width x depth)	Part Number	Fits Wheelchair Widths	Fits Wheelchair Depths
14 x 14"	JC-1414	14"	13/14"
14 x 16"	JC-1416	14"	15/16"
15 x 15"	JC-1515	15"	14/15"
15 x 17"	JC-1517	15"	16/17"
16 x 16"	JC-1616	16"	15/16"
16 x 18"	JC-1618	16"	17/18"
16 x 20"	JC-1620	16"	19/20"
17 x 17"	JC-1717	17"	16/17"
18 x 16"	JC-1816	18"	15/16"
18 x 18"	JC-1818	18"	17/18"
18 x 20"	JC-1820	18"	19/20"
20 x 16"	JC-2016	20"	15/16"
20 x 18"	JC-2018	20"	17/18"
20 x 20"	JC-2020	20"	19/20"

## General Specifications

HCPC code: E2624 pending  
 Weight capacity: 300 lbs.  
 Weight: 16 x 16," 2.2 lbs  
 Limited Warranty: Two Years  
 Base material: Polyethylene  
 Top foam: Polyurethane  
 Cover: Breathable spandex and spacer fabric. Polyester.

## Toppings / Additional Items

Reticulated Foam Well Insert Kit  
 Ride CAM® Wedge Kit  
 1" Lateral Thigh Support Wedge (pair)  
 1" Medial Thigh Support Insert (pair)  
 1" Cushion Orientation Wedge  
 Extra Cushion Cover



**Don't forget  
a back support!**

The Java cushion works best when paired with a Ride Java® Back.



**Ride Designs®**  
 a branch of Aspen Seating, LLC  
 4211-G South Natches Court  
 Sheridan, Colorado 80110

phone: 303.781.1633  
 toll-free: 866.781.1633  
 www.ridedesigns.com

Patents: [www.ridedesigns.com/patents](http://www.ridedesigns.com/patents)  
 © 2014, Ride Designs. 090-107-A

